

# Evaluating Cross-Lingual Transfer Learning Approaches in Multilingual Conversational Agent Models

**Lizhen Tan**  
Amazon  
ltn@amazon.com

**Olga Golovneva**  
Amazon  
olggol@amazon.com

## Abstract

With the recent explosion in popularity of voice assistant devices, there is a growing interest in making them available to user populations in additional countries and languages. However, to provide the highest accuracy and best performance for specific user populations, most existing voice assistant models are developed individually for each region or language, which requires linear investment of effort. In this paper, we propose a general multilingual model framework for Natural Language Understanding (NLU) models, which can help bootstrap new language models faster and reduce the amount of effort required to develop each language separately. We explore how different deep learning architectures affect multilingual NLU model performance. Our experimental results show that these multilingual models can reach same or better performance compared to monolingual models across language-specific test data while require less effort in creating features and model maintenance.

## 1 Introduction

The recent surge in popularity of voice assistants, such as Google Home, Apple’s Siri, or Amazon’s Alexa resulted in interest in scaling these products to more regions and languages. This means that all the components supporting Spoken Language Understanding (SLU) in these devices, such as Automatic Speech Recognition (ASR), Natural Language Understanding (NLU), and Entity Resolution (ER) are facing the challenges of scaling the development and maintenance processes for multiple languages and dialects.

When a voice assistant is launched in a new locale, its underlying speech processing components are often developed specifically for the targeted country, marketplace, and the main language variant of that country. Many people assume that if a device “understands” and “speaks” in a specific language, for example English, it should be able to work equally well for any English-speaking country, but this is a misunderstanding. For instance, if a speaker of UK English asks a device trained on data collected in the United States “*tell me a famous football player*”, it is highly unlikely that this device will provide the user’s desired answer, since *football* means different things in the US and UK cultures. As a result, developers need to take into account not only the language or dialectal differences, but also local culture, to provide the right information in the right language setup. An increase in the number of target marketplaces often means a linear increase in effort needed to develop and maintain such locale-specific models.

NLU models, which classify the user’s intent and extract any significant entities from the user’s utterance, face the same challenge of maintaining high accuracy while being able to accommodate multiple dialects or language content. The major tasks in NLU are intent classification and slot filling. Intent classification is a task to predict what action the user intends the voice assistant to take. Slot filling is a task to identify the specific semantic arguments for the intention. For example, if the user’s request is to “*play Poker Face by Lady Gaga*”, the user’s intention will be “*play music*”, while in order to fulfill this command with specified details, the system needs to capture the slots for {*song name = Poker*

*Face*}, and {*artist name = Lady Gaga*}. These tasks are called intent classification (IC) and named entity recognition (NER), respectively.

One common approach is to use a max-entropy (MaxEnt) classification model for the IC task and a conditional random fields (CRF) model for the NER task. Following the advent of deep learning techniques in related fields, such as computer vision and natural language processing, deep learning is becoming more popular in NLU as well. Some of the recent multilingual approaches to NLU include, for example, the Convolutional Neural Network (CNN) model for sentence classification (Kim, 2014), or the Long Short-Term Memory (LSTM) model for NER prediction (Lample et al., 2016; Kurata et al., 2016). In the deep neural network architecture, the aforementioned NLU tasks can be combined into a single multi-task classification model. An increasing number of experiments also focus on multilingual setups, especially in the field of machine translation, where the task is to translate input from one language to another (Johnson et al., 2016).

One recent thread of multilingual research centers around learning multilingual word representation. Multilingual word embeddings in the shared cross-lingual vector space have one main property: words from different languages but with similar meaning must be geometrically close. This property allows for transfer learning from one language to another in various multilingual tasks, such as dependency parsing (Kondratyuk, 2019; Wang et al., 2019) or classification and NER (Lample and Conneau, 2019; Pires et al., 2019). A number of model architectures have been proposed to pre-train multilingual word representations, such as leveraging large-scaled LSTM networks trained on monolingual corpora and adversarial setup for space alignment (Conneau et al., 2017; Lample et al., 2017), or transformers trained on multilingual corpora as a single language model (Lample and Conneau, 2019).

Although some of these models can be used to solve IC and NER tasks by appending corresponding decoders to generate final predictions, it is not straightforward to use them in production environments due to latency and memory constraints. A different way of benefitting from larger models could be to use them for transfer learning to smaller-size models to improve their performance by initializing some parts of the model with close-to-optimal rather than random weights. In this paper, we extend the multi-task approach studied in (Do and Gaspers, 2019) to a general multilingual model for IC and NER tasks, based on deep learning techniques, such as a bidirectional Long Short-Term Memory (biLSTM) CRF sequence labeling model for NER along with a multilayer perceptron (MLP) for IC.

We also explore multilingual transfer learning and its benefits to our setup. Transfer learning is widely adapted for zero-shot or few-shot setups, and was explored in some multilingual NLP studies (McDonald et al., 2011; Naseem et al., 2012; Chen et al., 2018), and also has been used in multi-task IC-NER models (Do and Gaspers, 2019), yet to the best of our knowledge, there is no study applying transfer learning for data-rich target languages in a multilingual setup. In our experiment, we apply few-shot transfer learning from data-rich languages to a language with a smaller amount of training data. In addition, we also apply transfer learning to mimic the situation of expanding the model ability to same-level-resource language with known context from another high-resource language(s), such that the new multilingual model will “inherit” context information from its ancestors. We investigate these approaches to transfer learning and their effects on model performance. We show that transfer learning can improve NLU model performance even in data-rich conditions.

## 2 Multilingual model architecture for DC, IC, and NER tasks

Single-language models are usually trained with data in a specific language, yet the model architecture is shared among different model instances (one per language). It follows that using the same model architecture, we should be able to train a generalized multilingual model which is fed by data from multiple languages.

NLU model is first trained to recognize the utterance domain, such as Music, Weather, Notifications, and then it is trained to perform domain-specific IC and NER tasks. In our experiments, the domain classification (DC) model is a MaxEnt logistic regression model. Despite the relatively simple architecture, this model shows good performance on DC task in data-rich conditions. For IC and NER tasks, we build a multi-task deep neural network (DNN) model. We first map input tokens into a share-

space word embedding, and then feed them into a biLSTM encoder to obtain context information; this content then propagates to the downstream tasks, with CRF used for NER prediction, and an MLP classifier used for IC prediction. We call this a self-trained multilingual (STM) model. Figure 1 shows the model architecture.

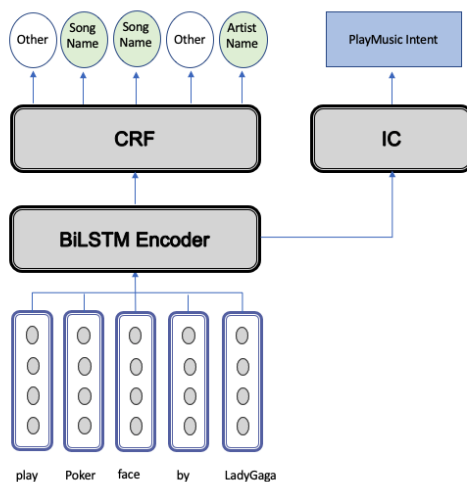


Figure 1: Multi-task model for IC and NER prediction. Tokens are first embedded into word vectors, then fed in to a biLSTM encoder, whose output is used in both CRF and MLP for NER and IC, respectively.

In the transfer learning experiments, we examined the following approaches:

1. Trained model on high-resource language(s), then transferred both encoder and decoder to the new multi-lingual model with fine-tuning (EncDecTL models).
2. Trained model on high-resource language(s), then transferred only encoder with fixed parameters to the new multi-lingual model (EncTL models).
3. Trained model on high-resource language(s), then transferred only encoder with variable learning rate, that we gradually unfreeze embeddings with training steps during fine-tuning (EncVLR TL models).

Figure 2(a) shows the architecture for approach 1, and Figure 2(b) shows the architecture for approaches 2 and 3.

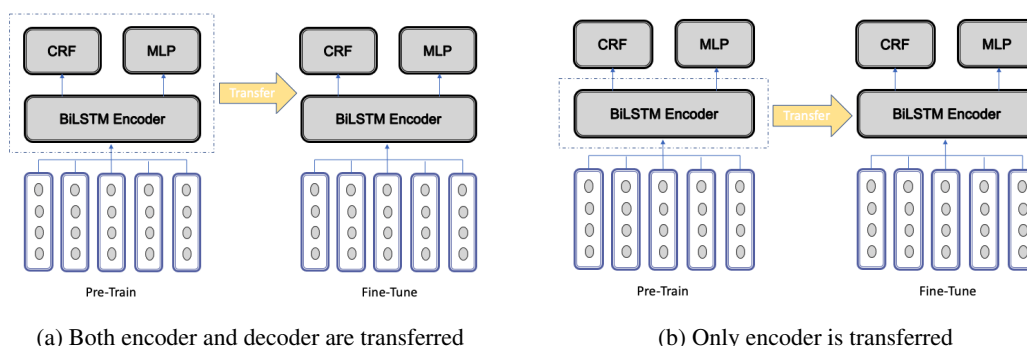


Figure 2: Transfer learning model architectures

We limit our architecture to a small-sized DNN model to avoid memory and latency issues in production environment:

- **Embedding:** Concatenation of share-spaced word embedding and character embedding trained on a 3-filter convolutional neural network (CNN). All embeddings for DNN models are initialized with fastText supervised multilingual word embeddings, aligned in a single vector space (Conneau et al., 2017). Aligned multilingual word embeddings kept fixed in pre-training model, and trained during fine-tuning.
- **Encoder:** 2-layer biLSTM with 512 dimensions in each hidden layer.
- **Decoders:** Both the MLP classifier used for IC task and the CRF sequence labeler used for the NER task have 512 dimensions in each block’s hidden layer, and GELU activation function. We also used dropout to prevent overfitting. All models were trained for 160 epochs with early stopping (experiments were attempted to increase the number of epochs, yet this did not show much change in model performance).
- **Loss function:** A combination of loss from both tasks of IC and NER:  $L_{total} = \alpha L_{ic} + \beta L_{ner}$ , where  $\alpha$  and  $\beta$  are the associated weight of each loss contribution. In our experiments, we have fixed both  $\alpha$  and  $\beta$  to 1.

### 3 Experiments and discussion

#### 3.1 Data

We train our models using data collected for four languages, including three relatively closely related language: UK English, Spanish, and Italian. In addition to these three similar languages, we also collected a dataset of Hindi, a language which is lexically and grammatically different from the other three. All utterances represent users’ requests and are annotated with corresponding DC, IC, and NER tags. Summary statistics of the data set is shown in Table 1. We limit our experiments to the seven NLU domains: Communication, General Media, Home Automation, Music, Notifications, Shopping, and Video. Each training set is further divided into training and validation split in ratio 9:1.

Language	Number of utterances in train/test split	Intent types	Slot types
English	2,121,583 / 117,546	316	282
Spanish	2,927,850 / 144,156	365	311
Italian	2,435,459 / 107,298	379	324
Hindi	370,465 / 69,024	302	267

Table 1: Summary statistics of the data set

#### 3.2 Results and discussion

Following (Schuster et al., 2019), we evaluate our models according to four metrics: domain accuracy for the DC task, intent accuracy for the IC task, micro-averaged slot F1 for NER prediction, and frame accuracy which is the relative number of utterances for which the domain, intent, and all slots are correctly identified. Relative performance for all model architectures evaluated on each language-specific test set is shown in Figure 3. Metrics are averaged across three model runs for English, Spanish and Italian test results, whereas two model runs were performed for Hindi; detailed numbers are provided in Appendix A. The baseline models used for the relative metric performance are monolingual models with a MaxEnt classifier for IC and a CRF model for NER (*Mono MaxEnt*) trained on data set which consists of utterances in the target language only. For example, in the case of Spanish, the relative performance for all models is calculated against the Mono MaxEnt model trained on Spanish data only.

All performance metrics show similar pattern: multilingual DNN models usually perform better than monolingual models, benefitting from biLSTM setup and encoder transfer learning. The only exception is domain accuracy score, where we observe only slight variations for mono- and multilingual models. The reason is because the DC model in all experiments is governed by MaxEnt model and is not affected by the changing DNN setup, but only training data mixing. Non-English models benefit from encoder transferred from pre-trained mono- and multilingual models, whereas additional decoder transfer slightly

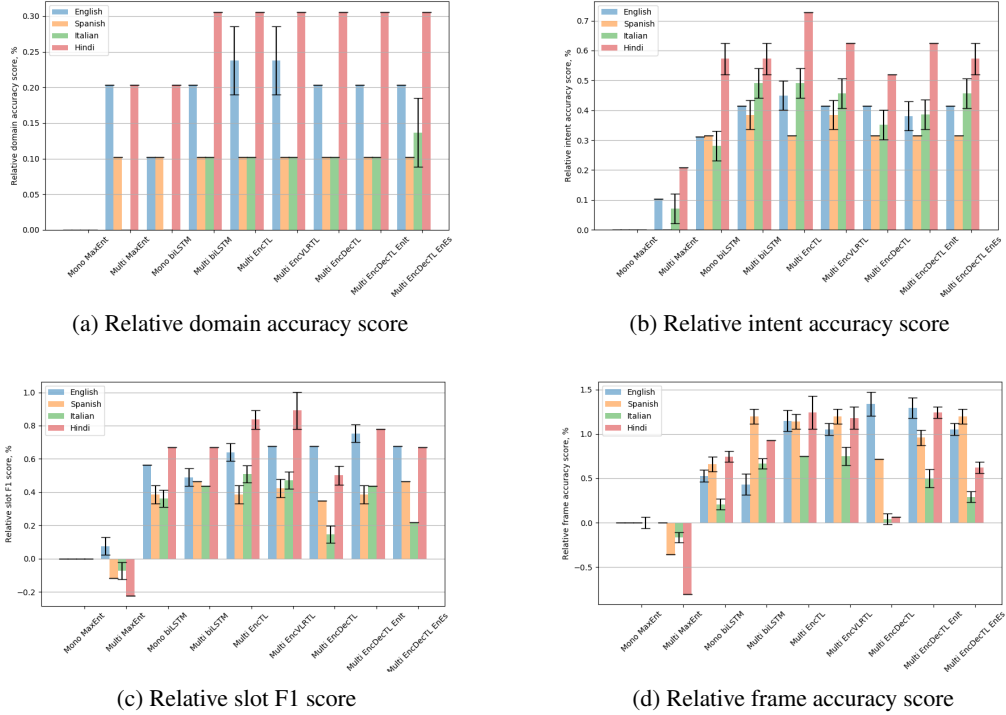


Figure 3: Percentage change in model performance for mono- and multilingual models with respect to the monolingual MaxEnt model. All models for transfer learning were pre-trained on English data. In addition, two encoder-decoder transfer learning models were built on the mix of English and Italian (EnIt) and English and Spanish (EnEs) models

degrades model performance, but still beats the baseline. Mixing languages in pre-training phase (Table 2 only slightly improves target model performance). For English, EncDecTL model with transfer learning performs the best across all metrics, with EncTL model showing similar performance; while for Spanish and Italian, EncVLRtL pretrained on English is the best model among the pool (see Appendix A for detailed pairwise model comparison). Overall the best average performance across the languages is observed in DNN models with encoder transfer learning, which has about 1% improvement in frame accuracy. Interestingly, more improvement ( $> 1\%$ ) in frame accuracy is observed in applying transfer learning on Hindi; a lexically and grammatically different language than the family of the pretrained languages. This improvement may be due to the fact that the baseline model for Hindi language was trained on a low-resource dataset, thus the encoder and decoders can learn more information from the added data, whereas encoder and decoder learning from a similar language have already been near-to-optimal, and the added data do not contribute more information gain in training. Default DNN models without transfer learning are the next best performing models (Table 3). These model results demonstrate that it is possible not only to create a single model that will serve multiple languages simultaneously, but also to expect some performance improvements.

Deep diving into EncDecTL errors for non-English languages, we found that the failures occur due to the differences in intent and slot label distributions in training data across different languages. When intents or slot labels from target language are missing in the pre-trained model, these entities are not represented in decoder’s vocabulary. In our setup, the decoder’s vocabulary is being transferred along with weights matrices, so the decoder fails to learn and predict new labels simply because they are missing from the list of the possible outputs. Since differences in slot labeling are more common than in intent labelling, we observe higher degradations for slot F1 and frame accuracy scores than for intent accuracy. Encoder, on the other hand, operates with aligned multilingual word embeddings only, and is not affected by the differences in annotations. This label/intent missing issue could be mitigated by the

Target language	Pre-training language	SEMER	Domain accuracy	Intent accuracy	Slot F1	Frame accuracy
Italian	English	1.004	1.000	0.999	0.997	0.994
	English & Spanish	1.002	1.000	1.000	0.998	0.996
Spanish	English	1.000	1.000	0.999	0.996	0.996
	English & Italian	1.000	1.000	0.999	0.999	0.998

Table 2: *Multi-lingual biLSTM* model performance for the targeted languages with monolingual and multilingual encoder-decoder transfer learning on both Italian and Spanish test data. (Values are normalized based on *Multi-lingual biLSTM*. See Appendix A for more details.)

Model	Average intent accuracy improvement(%)	Average slot F1 improvement(%)	Average frame accuracy improvement(%)
DNN without transfer learning	0.45	0.45	0.71
DNN with encoder transfer learning	0.42	0.53	0.99
DNN with encoder transfer learning and variable learning rate	0.42	0.53	1.00

Table 3: Average multilingual model performance change across English, Spanish and Italian test sets for different DNN setups.

expanding decoder’s vocabulary in the fine-tuning model with intent and slot labels specific to the target language.

Finally, to understand how the DNN models affect latency, we measure average time taken by the statistical model to evaluate performance on the full multilingual test set over three runs. We found that the latency between the models is comparable, the DDN models even have a slightly lower relative average runtime of 0.95 versus 1.05 for MaxEnt models (detailed can be found in Appendix B for each model architecture).

## 4 Conclusions

In this paper, we propose a framework for building general multilingual NLU models, which can be used across different marketplaces and languages.

To choose the model with the best performance, we use language-specific test sets to evaluate the candidate models and their corresponding baseline models (e.g. English biLSTM-CRF model vs. monolingual English MaxEnt-CRF model) along four metrics, domain accuracy, intent accuracy, slot F1, and frame accuracy. The models which win in most of the evaluation metrics are the final picks. We find that models built from a simple multi-task biLSTM-CRF model setup are comparable to standard production models in terms of latency constraints required for on-the-fly voice assistant conversational models.

We observe performance improvements in all models with the introduction of transfer learning. Encoder transfer produced the greatest improvements whereas the transfer of the decoder did not bring much change when compared to the baseline model performance, except when tested on an English test set, when the transfer learning is performed from the model trained on English data. This is due to the fact that the target non-English language contains slots or intents which are not included in the pre-trained model, thus the decoder fails to predict correct classes simply because they are missing in the vocabulary. To mitigate this effect, a decoder with default initialization gives better performance because it now can embrace all available slots and intents in the target language realm.

Furthermore, we find that a model pre-trained in a multilingual setup performs better than the one trained on a monolingual data set. This confirms that a multilingual model built based on lexically and orthographically similar languages may provide more beneficial context information to any similar target language. Experimental result on Hindi show that such a multilingual model can work even for non-alike languages with the same or better performance improvement. This confirms that a common multilingual

model can be used to support multiple language with better results than a set of monolingual models.

With a single general multilingual NLU model, bootstrapping new languages can be faster as we can use cross-lingual contextual information from all existing high-resource languages. At the same time, maintaining only one model requires much less effort in terms of regular model updates.

## References

- Xilun Chen, Ahmed Hassan Awadallah, Hany Hassan, Wei Wang, and Claire Cardie. 2018. Zero-resource multilingual model transfer: Learning what to share. *CoRR*, abs/1810.03552.
- Alexis Conneau, Guillaume Lample, Marc’Aurelio Ranzato, Ludovic Denoyer, and Hervé Jégou. 2017. Word translation without parallel data. *CoRR*, abs/1710.04087.
- Jacob Devlin, Ming-Wei Chang, Kenton Lee, and Kristina Toutanova. 2018. BERT: pre-training of deep bidirectional transformers for language understanding. *CoRR*, abs/1810.04805.
- Quynh Ngoc Thi Do and Judith Gaspers. 2019. Cross-lingual transfer learning for spoken language understanding. *CoRR*, abs/1904.01825.
- Melvin Johnson, Mike Schuster, Quoc V. Le, Maxim Krikun, Yonghui Wu, Zhifeng Chen, Nikhil Thorat, Fernanda B. Viégas, Martin Wattenberg, Greg Corrado, Macduff Hughes, and Jeffrey Dean. 2016. Google’s multilingual neural machine translation system: Enabling zero-shot translation. *CoRR*, abs/1611.04558.
- Yoon Kim. 2014. Convolutional neural networks for sentence classification. In *Proceedings of the 2014 Conference on Empirical Methods in Natural Language Processing (EMNLP)*, pages 1746–1751, Doha, Qatar, October. Association for Computational Linguistics.
- Daniel Kondratyuk. 2019. 75 languages, 1 model: Parsing universal dependencies universally. *CoRR*, abs/1904.02099.
- Gakuto Kurata, Bing Xiang, Bowen Zhou, and Mo Yu. 2016. Leveraging sentence-level information with encoder LSTM for natural language understanding. *CoRR*, abs/1601.01530.
- Guillaume Lample and Alexis Conneau. 2019. Cross-lingual language model pretraining. *CoRR*, abs/1901.07291.
- Guillaume Lample, Miguel Ballesteros, Sandeep Subramanian, Kazuya Kawakami, and Chris Dyer. 2016. Neural architectures for named entity recognition. In *Proceedings of the 2016 Conference of the North American Chapter of the Association for Computational Linguistics: Human Language Technologies*, pages 260–270, San Diego, California, June. Association for Computational Linguistics.
- Guillaume Lample, Ludovic Denoyer, and Marc’Aurelio Ranzato. 2017. Unsupervised machine translation using monolingual corpora only. *CoRR*, abs/1711.00043.
- Ryan McDonald, Slav Petrov, and Keith Hall. 2011. Multi-source transfer of delexicalized dependency parsers. In *Proceedings of the 2011 Conference on Empirical Methods in Natural Language Processing*, pages 62–72, Edinburgh, Scotland, UK., July. Association for Computational Linguistics.
- Tahira Naseem, Regina Barzilay, and Amir Globerson. 2012. Selective sharing for multilingual dependency parsing. In *Proceedings of the 50th Annual Meeting of the Association for Computational Linguistics (Volume 1: Long Papers)*, pages 629–637, Jeju Island, Korea, July. Association for Computational Linguistics.
- Telmo Pires, Eva Schlinger, and Dan Garrette. 2019. How multilingual is multilingual BERT? In *Proceedings of the 57th Annual Meeting of the Association for Computational Linguistics*, pages 4996–5001, Florence, Italy, July. Association for Computational Linguistics.
- Sebastian Schuster, Sonal Gupta, Rushin Shah, and Mike Lewis. 2019. Cross-lingual transfer learning for multilingual task oriented dialog. In *Proceedings of the 2019 Conference of the North American Chapter of the Association for Computational Linguistics: Human Language Technologies, Volume 1 (Long and Short Papers)*, pages 3795–3805, Minneapolis, Minnesota, June. Association for Computational Linguistics.
- Yuxuan Wang, Wanxiang Che, Jiang Guo, Yijia Liu, and Ting Liu. 2019. Cross-lingual BERT transformation for zero-shot dependency parsing. In *Proceedings of the 2019 Conference on Empirical Methods in Natural Language Processing and the 9th International Joint Conference on Natural Language Processing (EMNLP-IJCNLP)*, pages 5721–5727, Hong Kong, China, November. Association for Computational Linguistics.

# Appendices

## A Multilingual test results on language-specific datasets

Three model runs are performed on English, Spanish and Italian, while two model runs are performed on Hindi. All values are normalized based on *Multi-lingual biLSTM*, the 2-layer biLSTM CRF cross-lingual model.

Model #	Model type	Embedding transfer	Model books transfer	English					Spanish				
				SEMER	Domain accuracy	Intent accuracy	Slot F1	Frame accuracy	SEMER	Domain accuracy	Intent accuracy	Slot F1	Frame accuracy
1	Target only	CRF Max Ent	N/A	1.044	1.000	0.996	0.995	0.995	1.011	0.999	0.996	0.995	0.989
2	Cross-lingual	CRF Max Ent	N/A	1.031	1.000	0.997	0.996	0.995	1.014	0.999	0.996	0.994	0.985
3	Target only	2-layer biLSTM CRF	+ Target only	1.014	1.000	0.999	1.001	1.001	1.006	0.999	0.999	0.999	0.995
4	Cross-lingual	2-layer biLSTM CRF	+ Cross-lingual	1.000	1.000	1.000	1.000	1.000	1.000	1.000	1.000	1.000	1.000
5	Cross-lingual	2-layer biLSTM CRF	+ Cross-lingual	0.996	1.000	1.000	1.002	1.007	1.000	1.000	1.000	1.000	1.000
6	Cross-lingual	2-layer biLSTM CRF	+ Cross-lingual	0.995	1.000	1.000	1.001	1.006	0.999	1.000	1.000	1.000	1.000
7	Cross-lingual	2-layer biLSTM CRF	+ Cross-lingual	0.995	1.000	1.000	1.002	1.008	1.000	1.000	0.999	0.999	0.996
8	Cross-lingual	2-layer biLSTM CRF	+ Cross-lingual	0.996	1.000	1.000	1.003	1.009	1.000	1.000	0.999	0.999	0.998
9	Cross-lingual	2-layer biLSTM CRF	+ Cross-lingual	0.994	1.000	1.000	1.002	1.006	0.998	1.000	1.000	1.000	1.001
Model Comparison vs. model 2 means how model 1 performs relatively to model 2)													
2 vs. 1				-1.200	0.000	0.082	0.068	0.008	0.301	0.036	0.016	-0.058	-0.335
4 vs. 3				-1.416	0.000	0.120	-0.061	-0.074	-0.615	0.064	0.088	0.074	0.326
8 vs. 7				0.185	0.000	-0.007	0.062	0.011	-0.056	-0.011	0.029	0.025	0.227
9 vs. 7				-0.034	0.000	0.024	-0.017	-0.226	-0.259	-0.007	0.048	0.102	0.462
6 vs. 7				0.034	0.000	0.017	-0.054	-0.251	-0.101	-0.015	0.070	0.060	0.448
6 vs. 3				-1.910	0.000	0.123	0.088	0.521	-0.671	0.055	0.076	0.037	0.564

Italian						Hindi (only 2 model runs)					
SEMER	Domain accuracy	Intent accuracy	Slot F1	Frame accuracy	SEMER	Domain accuracy	Intent accuracy	Slot F1	Frame accuracy		
1.011	0.998	0.995	0.996	0.993	1.024	0.997	0.995	0.993	0.991		
1.010	0.999	0.996	0.995	0.992	1.029	0.999	0.996	0.991	0.983		
1.012	0.999	0.998	0.999	0.995	1.015	0.999	1.000	1.000	0.998		
1.000	1.000	1.000	1.000	1.000	1.000	1.000	1.000	1.000	1.000		
1.000	1.000	1.000	1.000	1.001	0.995	1.000	1.001	1.001	1.003		
1.001	1.000	1.000	1.000	1.001	0.995	1.000	1.001	1.002	1.003		
1.004	1.000	0.999	0.997	0.994	1.010	1.000	1.000	0.998	0.991		
1.005	1.000	0.999	1.000	0.998	0.995	1.000	1.001	1.001	1.003		
1.002	1.000	1.000	0.998	0.996	1.001	1.000	1.000	1.000	0.997		
-0.010	0.089	0.082	-0.055	-0.140	0.497	0.160	0.150	-0.273	-0.791		
-1.171	0.124	0.183	0.068	0.467	-1.505	0.060	0.014	0.002	0.171		
0.126	-0.013	0.009	0.241	0.463	-1.450	-0.003	0.070	0.253	1.166		
-0.179	0.013	0.091	0.052	0.243	-0.882	-0.017	0.026	0.146	0.536		
-0.337	-0.002	0.054	0.298	0.682	-1.492	-0.020	0.075	0.349	1.135		
-1.098	0.109	0.148	0.105	-0.461	1.471	0.003	-0.070	-0.253	-1.153		

## B Average relative evaluation runtime for each model on the full test set

All values are normalized based on *Multi-lingual biLSTM*, the 2-layer biLSTM CRF cross-lingual model.

Model #	Training set	Model type	Embedding transfer	Model blocks transfer	Runtime (rel)
1	Target only	CRF Max Ent	N/A	N/A	1.00
2	Cross-lingual	CRF Max Ent	N/A	N/A	1.05
3	Target only	2-layer biLSRTM + CRF	Target only	-	0.97
4	Cross-lingual	2-layer biLSRTM + CRF	Cross-lingual	-	1.00
5	Cross-lingual	2-layer biLSRTM + CRF	Cross-lingual	English: encoder	0.97
6	Cross-lingual	2-layer biLSRTM + CRF	Cross-lingual	English: encoder + steps lr scheduler	0.95
7	Cross-lingual	2-layer biLSRTM + CRF	Cross-lingual	English: encoder + decoder	0.98
8	Cross-lingual	2-layer biLSRTM + CRF	Cross-lingual	English + Italian: encoder + decoder	1.02
9	Cross-lingual	2-layer biLSRTM + CRF	Cross-lingual	English + Spanish: encoder + decoder	1.02