

Controlled Text Generation for Data Augmentation in Intelligent Artificial Agents

Nikolaos Malandrakis¹, Minmin Shen², Anuj Goyal²,
Shuyang Gao², Abhishek Sethi², Angeliki Metallinou²

¹ Signal Analysis and Interpretation Laboratory (SAIL), USC, Los Angeles, CA 90089

² Amazon Alexa AI

malandra@usc.edu,

{shenm, anujgoya, shuyag, abhsethi, ametalli}@amazon.com

Abstract

Data availability is a bottleneck during early stages of development of new capabilities for intelligent artificial agents. We investigate the use of text generation techniques to augment the training data of a popular commercial artificial agent across categories of functionality, with the goal of faster development of new functionality. We explore a variety of encoder-decoder generative models for synthetic training data generation and propose using conditional variational auto-encoders. Our approach requires only direct optimization, works well with limited data and significantly outperforms the previous controlled text generation techniques. Further, the generated data are used as additional training samples in an extrinsic intent classification task, leading to improved performance by up to 5% absolute f-score in low-resource cases, validating the usefulness of our approach.

1 Introduction

Voice-powered artificial agents have seen widespread commercial use in recent years, with agents like Google’s Assistant, Apple’s Siri and Amazon’s Alexa rising in popularity. These agents are expected to be highly accurate in understanding the users’ requests and to be capable of handling a variety of continuously expanding functionality. New capabilities are initially defined via a few phrase templates. Those are expanded, typically through larger scale data collection, to create datasets for building the machine learning algorithms required to create a serviceable Natural Language Understanding (NLU) system. This is a lengthy and expensive process that is repeated for new functionality expansion and can significantly slow down development time.

We investigate the use of neural generative encoder-decoder models for text data generation.

Given a small set of phrase templates for some new functionality, our goal is to generate new *semantically similar* phrases and augment our training data. This data augmentation is not necessarily meant as a replacement for large-scale data collection, but rather as a way to accelerate the early stages of new functionality development. This task shares similarities with paraphrasing. Therefore, inspired by work in paraphrasing (Prakash et al., 2016) and controlled text generation (Hu et al., 2018), we investigate the use of variational autoencoder models and methods to condition neural generators.

For controlled text generation, (Hu et al., 2018) used a variational autoencoder with an additional discriminator and trained the model in a wake-sleep way. (Zhou and Wang, 2018) used reinforcement via an emoji classifier to generate emotional responses. However, we found that when the number of samples is relatively small compared to the number of categories, such an approach might be counter-productive, because the required classifier components can not perform well. Inspired by recent advantages of connecting information theory with variational auto-encoders and invariant feature learning (Moyer et al., 2018), we instead use this approach to our controlled text generation task, without a discriminator.

Furthermore, our task differs from typical paraphrasing in that semantic similarity between the output text and the NLU functionality is not the only objective. The synthetic data should be evaluated in terms of its lexical diversity and novelty, which are important properties of a high quality training set.

Our key contributions are as follows:

- We thoroughly investigate text generation techniques for NLU data augmentation with sequence to sequence model and variational auto-encoders, in an atypically low-resource

setting.

- We validate our method in an extrinsic intent classification task, showing that the generated data brings considerable accuracy gains in low resource settings.

2 Related Work

Neural networks have revolutionized the field of text generation, in machine translation (Sutskever et al., 2014), summarization (See et al., 2017) and image captioning (You et al., 2016). However, conditional text generation has been relatively less studied as compared to conditional image generation and poses some unique problems. One of the issues is the non-differentiability of the sampled text that limits the applicability of a global discriminator in end-to-end training. The problem has been relatively addressed by using CNNs for generation (Rajeswar et al., 2017), policy gradient reinforcement learning methods including SeqGAN (Yu et al., 2017), LeakGAN (Guo et al., 2018), or using latent representation like Gumbel softmax ((Jang et al., 2016)). Many of these approaches suffer from high training variance, mode collapse or cannot be evaluated beyond a qualitative analysis.

Many models have been proposed for text generation. Seq2seq models are standard encoder-decoder models widely used in text applications like machine translation (Luong et al., 2015) and paraphrasing (Prakash et al., 2016). Variational Auto-Encoder (VAE) models are another important family (Kingma and Welling, 2013) and they consist of an encoder that maps each sample to a latent representation and a decoder that generates samples from the latent space. The advantage of these models is the variational component and its potential to add diversity to the generated data. They have been shown to work well for text generation (Bowman et al., 2016). Conditional VAE (CVAE) (Kingma et al., 2014) was proposed to improve over seq2seq models for generating more diverse and relevant text. CVAE based models (Serban et al., 2017; Zhao et al., 2017; Shen et al., 2017; Zhou and Wang, 2018) incorporate stochastic latent variables that represents the generated text, and append the output of VAE as an additional input to decoder.

Paraphrasing can be performed using neural networks with an encoder-decoder configuration, including sequence to sequence (S2S) (Luong et al., 2015) and generative models (Bowman et al., 2016) and various modifications have been proposed to

domain: Movies
intent: MovieRating
slots: movie_title

can children watch the movie movie_title
can i watch the movie movie_title with my son
is movie_title p. g. thirteen
is movie_title suitable for children

domain: Movies
intent: GetActorMovies
slots: genre, person_name

give me genre movies starring person_name
suggest genre movies starring person_name
what genre movies is person_name in
what are genre movies with person_name

Figure 1: Example of template carrier phrases for two signatures s .

allow for control of the output distribution of the data generation (Yan et al., 2015; Hu et al., 2018).

Unlike the typical paraphrasing task we care about the lexical diversity and novelty of the generated output. This has been a concern in paraphrase generation: a generator that only produces trivial outputs can still perform fairly well in terms of typical paraphrasing evaluation metrics, despite the output being of little use. Alternative metrics have been proposed to encourage more diverse outputs (Shima and Mitamura, 2011). Typically evaluation of paraphrasing or text generation tasks is performed by using a similarity metric (usually some variant of BLEU (Papineni et al., 2002)) calculated against a held-out set (Prakash et al., 2016; Rajeswar et al., 2017; Yu et al., 2017).

3 Methodology

3.1 Problem Definition

New capabilities for virtual agents are typically defined by a few phrases templates, also called *carrier phrases*, as seen in Fig. 1. In carrier phrases the entity values, like the movie title ‘Batman’, are replaced with their entity types, like **movie_title**. These are also called *slot values* and *slot types*, respectively, in the NLU literature. For our generation task, these phrases define a category: all carrier phrases that share the same domain, intent and slot types are equivalent, in the sense that they prompt the same agent response. For the remainder of this paper we will refer to the combination of domain, intent and slot types as the *signature* of a

phrase. Given a small amount of example carrier phrases for a given signature of a new capability (typically under 5 phrases), our goal is to generate additional semantically similar carrier phrases for the target signature.

The core challenge lies in the very limited data we can work with. The low number of phrases per category is, as we will show, highly problematic when training some adversarial or reinforcement structures. Additionally the high number of categories makes getting an output of the desired signature harder, because many similar signatures will be very close in latent space.

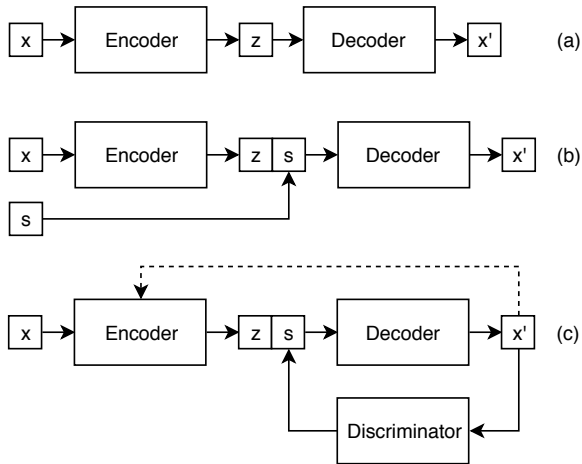


Figure 2: The variants of VAE we used: (a) VAE, (b) Conditional VAE (CVAE) and (c) VAE with discriminator

3.2 Generation models

Following is a short description of the models we evaluated for data generation. For all models we assume we have training carrier phrases $c_i \in D_{tr}^s$ across signatures s , and we pool together the data from all the signatures for training. The variational auto-encoders we used can be seen in Fig 2.

Sequence to Sequence with Attention Here, we use the seq2seq with global attention proposed in (Luong et al., 2015) as our baseline generation model. The model is trained on all input-output pairs of carrier phrases belonging to the same signature s , e.g., $c_1, c_2 \in D_{tr}^s$. At generation, we aim to control the output by using an input carrier of the target signature s .

Variational Auto-Encoders (VAEs) The VAE model can be trained with a paraphrasing objective, e.g., on pairs of carrier phrases $c_1, c_2 \in D_{tr}^s$, similarly to the seq2seq model. Alternatively, the

VAE model can be trained with a reconstruction objective e.g., $c_1 \in D_{tr}$ can be both the input and the output. However, if we train with a reconstruction objective, during generation, we ignore the encoder and randomly sample the VAE prior z (typically from a normal distribution). As a result, we have no control over the output signature distribution, and we may generate any of the signatures s in our training data. This disadvantage motivates the investigation of two controlled VAE models.

VAE with discriminator is a modification of a VAE proposed by (Hu et al., 2018) for a similar task of controlled text generation. In this case, adversarial type of training is used by training a discriminator, i.e., a classifier for the category (signature s), to explicitly enforce control over the generated output. The network is trained in steps, with the VAE trained first, then the discriminator is attached and the entire network re-trained using a sleep-wake process. We tried two variations of this, one training a VAE, another training a CVAE, before adding the discriminator. Note that control over the output depends on the discriminator performance. While this model worked well for controlling between a small number of output categories as in (Hu et al., 2018), our setup includes hundreds of signatures s , which posed challenges in achieving accurate control over the output phrases (Sec. 5.2).

Conditional VAE (CVAE) Inspired by (Moyer et al., 2018) for invariant feature learning, we propose to use a CVAE based controlled model structure. Such structure is a modification on the VAE, where we append the desired category label, here signature s , in 1-hot encoding, to each step of the decoder without an additional discriminator as shown in (Hu et al., 2018). Note that the original conditional VAE has already been applied to controlled visual settings (Yan et al., 2015). It has been shown that by direct optimizing the loss, this model automatically learns a invariant representation z that is independent of the category (signature s (Moyer et al., 2018)) although no explicit constraint is forced. We propose to use this model in our task, because it is easy to train (no wake-sleep or adversarial training), requires less data, and provides us a way to control the desired VAE output signature, by setting the desired signature encoding to s . Like the standard VAE, the CVAE can be trained either with a paraphrasing or with a reconstruction objective. If training with reconstruction,

during generation we randomly sample from \mathbf{z} but can control the output signature by setting \mathbf{s} .

All model encoders and decoders are GRUs. For the discriminator we tried CNN and LSTM with no significant performance differences.

4 Datasets

We experiment on two datasets collected for Alexa, a commercial artificial agent.

Movie dataset It contains carrier phrases that are created as part of developing new movie-related functionality. It is composed of 179 signatures defined with an average of eight carrier phrases each. This data represents a typical new capability that starts out with few template carriers phrases, and we use it to examine if this low resource dataset can benefit from synthetic data generation.

Live entertainment dataset It contains live customer data from deployed entertainment related capabilities (music, books, etc), selected for their semantic relevance to movies. These utterances were de-lexicalized by replacing slot values with their respective slot types. We used a frequency threshold to filter out rare carrier phrases, and ensure a minimum number of three carrier phrases per signature.

Table 1 shows the data splits for the movie, live entertainment and ‘all’ datasets, the latter containing both movies and live entertainment data, including the number of signatures, slot types and unique non-slot words in each set. While the data splits were stratified, signatures with fewer than four carriers were placed only in the train set, leading to the discrepancy in signature numbers across partitions.

5 Experiments

5.1 Experimental setup

At the core of our data augmentation task lies the question “what defines a good training data set?”. We can evaluate aspects of the generated data via synthetic metrics, but the most reliable method is to generate data for an extrinsic task and evaluate any improvements in performance. In this paper we employ both methods are reporting results for intrinsic and extrinsic evaluation metrics.

For the intrinsic evaluation, we train the data generator either only on movie data or on ‘all’ data (movies and entertainment combined), using the respective dev sets for hyper-parameter tuning. Dur-

ing generation, we similarly consider either the movies test set, or the ‘all’ test set, and aim to generate *ten synthetic phrases* per test set phrase. VAE type generators can be trained for paraphrasing ($c1 \rightarrow c2$) or reconstruction ($c1 \rightarrow c1$). During generation, sampling can be performed either from the prior, e.g., by ignoring the encoder and sampling $z \sim \mathcal{N}(0, I)$ to generate an output, or from the posterior e.g., using c_1 as input to the encoder and producing the output c_2 . Note that not all combinations are applicable to all models. Those applicable are shown in Table 3, where ‘para’, ‘recon’, ‘prior’ and ‘post’ denote paraphrasing, reconstruction, prior and posterior respectively. Special handling was required for a VAE with reconstruction training and prior sampling, where we have no control over the output signature. To solve this, we compared each output phrase to every signature in the train set (via BLEU4 (Papineni et al., 2002)) and assigned it to the highest scoring signature. Some sample output phrases can be seen in Fig. 3.

To examine the usefulness of the generated data for an extrinsic ask, we perform intent classification, a standard task in NLU. Our classifier is a BiLSTM model. We use the same data as for the data generation experiments (see Table 1), and group our class labels into intents (as opposed to signatures), which leads to classifying 136 intents in the combined movies and entertainment data (‘all’). Our setup follows two steps: First, the data generators are trained on ‘all’ train sets, and used to generate phrases for the dev sets (‘all’ and movies). Second, the intent classifier is trained on the ‘all’ train and dev sets (baseline), vs the combination of ‘all’ train, dev and generated synthetic data, which is our proposed approach. We evaluate on the ‘all’ and movies test sets, and use macro-averaged F-score across all intents as our metric.

5.2 Intrinsic evaluation

To evaluate the generated data we use an ensemble of evaluation metrics attempting to quantify three important aspects of the data: (1) how accurate or relevant the data is to the task, (2) how diverse the set of generated phrases is and (3) how novel these synthetic phrases are. Intuitively, a NLG system can be very accurate - generate valid phrases of the correct signature - while only generating phrases from the train set or while generating the same phrase multiple times for the same signature; either of these scenaria would not lead to useful data. To

domain	subset	carriers	signatures	slots	words
Movies	train	1,382	179	21	353
	dev	622	109	15	292
	test	520	69	10	254
Live Entertainment	train	4269	588	120	332
	dev	1236	244	77	194
	test	1335	271	74	217
All	train	5,651	767	141	685
	dev	1,858	353	92	486
	test	1,855	340	84	471

Table 1: Data distribution and splits. ‘All’ contains the combined Movie and Entertainment live datasets

domain	subset	carriers	intents
All	train	5651	136
	dev	1858	101
	train+dev	7509	136
	test	1855	94
Movies	test	520	37

Table 2: Data distribution and splits for the extrinsic task.

evaluate accuracy we compare the generated data to a held out *test set* using BLEU4 (Papineni et al., 2002) and the slot carry-over rate, the probability that a generated phrase contains the exact same slot types as the target signature s . To evaluate novelty we compare the generated data to the train set of the generator, using 1-BLEU4 (where higher is better) and 1-Match rate, where the match rate is the chance that a perfect match to a generated phrase exists in the train set. These scores tell us how different, at the lexical level, the generated phrases are to the phrases that already exist in the train set. Finally, to evaluate diversity we compare the phrases in the generated data to each other, using again 1-BLEU4 and the unique rate, the number of unique phrase produced over the total number of phrases produced. These scores indicate how lexically different the generated phrases are to each other. Figure 4 shows the set comparisons made to generate the intrinsic evaluation metrics. Note that these metrics mostly evaluate surface forms; we expect phrases generated for the same signature to be *semantically* similar to phrases with the same signature in the train set and to each other, however we would like them to be *lexically* novel and diverse.

Table 3 presents the intrinsic evaluation results, where generators are trained and tested on ‘all’ data,

for the best performing model per case, tuned on the dev set. First, note the slot carry over (slot c.o.), which can be used as a sanity check measuring the chance of getting a phrase with the desired slot types. Most models reach 0.8 or higher slot c.o. as expected, but some fall short, indicating failure to produce the desired signature. The failure for VAE and CVAE models with discriminators is most notable, and can be explained by the fact that we have a large number of train signatures (~ 800) and too few samples per signature (mean 8, median 4), to accurately train the discriminator. We verified that the discriminator overall accuracy does not exceed 0.35. The poor discriminator performance leads to the decoder not learning how to use signature s . The failure of VAE with posterior sampling is similarly explained by the large number of signatures: the signatures are so tightly packed in the latent space, that the variance of sampling \mathbf{z} is likely to result in phrases from similar but different signatures.

This sanity check leaves us with five reasonably performing models: S2S, VAE trained for reconstruction and sampled from the prior and CVAE with multiple training and sampling strategies. Overall, these models achieve high accuracy with respect to the slot c.o. and BLEU4 metrics, assisted by the rather limited vocabulary of the data. To examine the trade-offs between the models, in Fig. 5, we show the accuracy BLEU4 as a function of diversity unique rate, i.e., how many different phrases we generated. Each point is a model trained with different hyper-parameter settings, across relevant hyper-parameters, network component dimensionalities etc. As expected, diversity is negatively correlated with accuracy. We make similar observations for novelty metrics (plots omitted for brevity), i.e., diversity and novelty are negatively correlated

	Model: S2S
	Input: i negation feel like watching a movie with person_name
outputs	i negation like movies by person_name
	i negation feel like watching movies by person_name
	i negation feel like watching a movie by person_name
	i negation like person_name
	i negation feel like watching a movie
	i negation want to talk about person_name
	no i negation like person_name movies
	Model: VAE, sampling from prior distribution
	Input: GetMovieAwards (intent) - award_title , movie_title (slots)
outputs	did movie_title win an award_title
	any award_title won by movie_title
	tell me any award_title which movie_title won
	was movie_title nominated for an award_title the movie movie_title
	any award_title for movie_title
	what are the award_title which movie_title won
	give me any award_title the movie was nominated for
	Model: CVAE, sampling from prior distribution
	Input: GetActorMovies (intent) - genre , person_name (slots)
outputs	give me genre movies starring person_name
	show me other genre movies with person_name in it
	what are the genre movies that person_name starred in
	tell me genre movies starring person_name
	what are genre movies with person_name
	genre movies starring person_name
	suggest genre movies starring person_name

Figure 3: Sample output phrases. The S2S model and all posterior sampling models use a phrase as an input. For prior sampling the desired signature is the model input.

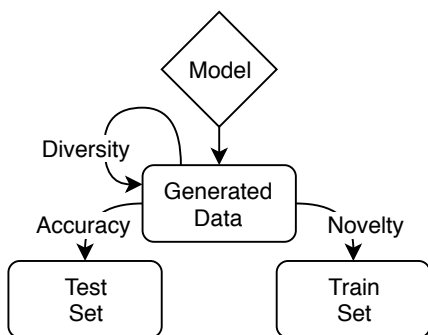


Figure 4: Intrinsic evaluation overview

to accuracy within the hyper-parameter constraints of each model. However the trade-off is not equally steep for all models. Across our experiments the VAE and CVAE models with reconstruction training and prior sampling provided the most favorable trade-offs with CVAE being the best option for very

high accuracy, as seen in Fig. 5.

In Table 4, we show intrinsic results on the movies test set. For brevity, we show the mean relative change for the best performing models for each metric, computed between using only movie data to train the generators vs using the combined ‘all’ data. In the latter case, the live entertainment data is added to train a more robust generator for movies. As expected, we notice a small loss in accuracy (-1.9 % rel. change on average for BLEU4) when using the ‘all’ data for generator training, but also a significant gain in diversity and novelty of the movie generated data (121 % and 153 % rel. change on average respectively for 1-BLEU4). Overall, the reconstruction VAE and CVAE models achieve the best results and have favorable performance trade-offs when using ‘all’ data to enrich movie data generation.

		S2S	VAE		VAE+DISC	CVAE			CVAE+DISC
training		para	recon	para	recon	recon	recon	para	recon
sampling		post	prior	post	prior	prior	post	post	prior
accuracy	BLEU4	0.86	0.91	0.24	0.42	0.91	0.88	0.90	0.11
	slot c.o.	0.84	0.95	0.02	0.12	0.98	0.93	0.95	0.01
diversity	1-BLEU4	0.06	0.19	0.83	0.84	0.14	0.23	0.33	0.19
	uniq. rate	0.58	0.68	0.98	0.76	0.44	0.56	0.68	0.97
novelty	1-BLEU4	0.25	0.07	0.75	0.98	0.04	0.12	0.21	0.99
	1-match rate	0.89	0.76	0.99	1.00	0.32	0.50	0.59	1.00

Table 3: Best performance per metric for each model when applied to ‘all’ domains.

metric	% change			
	CVAE prior	CVAE posterior	CVAE para	VAE prior
accuracy				
BLEU4	-0.7%	-0.7%	-4.3%	-2.0%
slot c.o.	-2.7%	-3.1%	-9.5%	-5.9%
diversity				
1-BLEU4	112.1%	103.6%	133.7%	134.6%
uniq. rate	19.6%	19.7%	32.7%	37.1%
novelty				
1-BLEU4	147.1%	40.7%	222.1%	201.2%
1-match rate	113.5%	36.7%	145.4%	90.1%

Table 4: Relative change when adding more training data for generator training (movies only vs ‘all’) across evaluation metrics on the movies test set

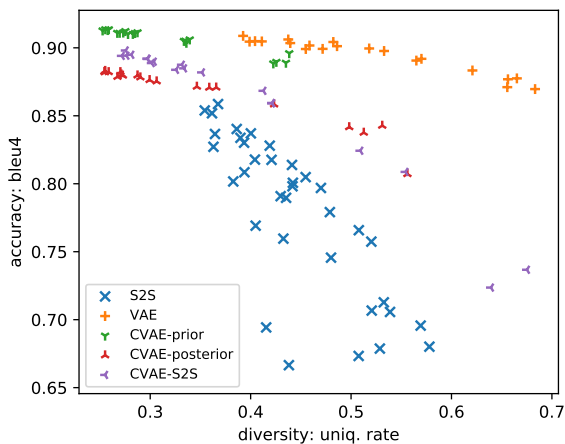
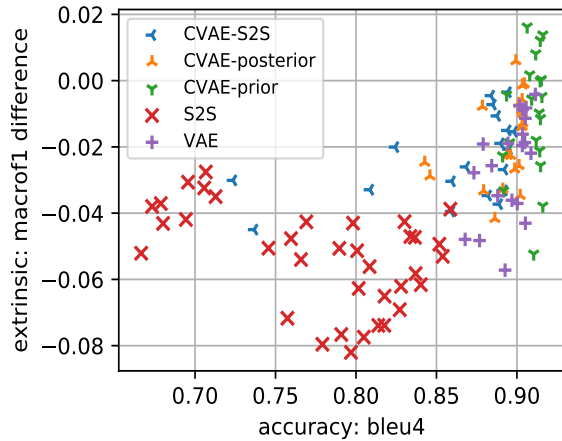


Figure 5: Intrinsic accuracy BLEU4 as a function of intrinsic diversity for the ‘all’ test set for multiple hyper-parameter combinations of each model.

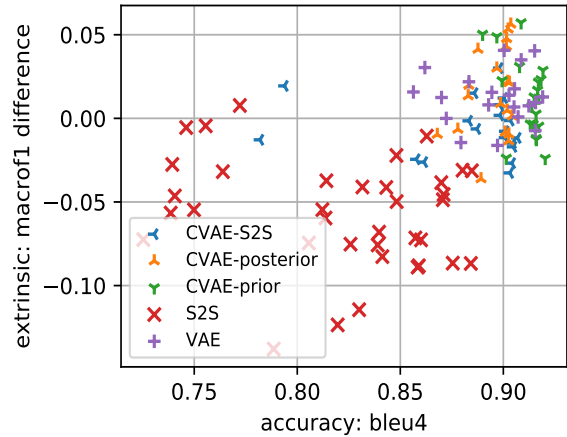
5.3 Extrinsic Evaluation

In Figure 6 we present the change in the F1 score for intent classification when adding the generated data into the classifier training (compared to the baseline classifier with no generated data) as

a function of the intrinsic BLEU4 accuracy metric. The plot presents results on the movies test set. Each point is a model trained with different hyper-parameters and the line $y = 0$ represents zero change from baseline, while models over this line represent improvement. Some hyper-parameter choices clearly lead to sub-optimal results, but they are included to show the relationship between intrinsic and extrinsic performance across a wider range of conditions. We notice that many generators produce useful synthetic data that lead to improvement in intent classification, with the best performing ones being the CVAE models with around 5% absolute improvement in F-score on the movie test set ($p < 0.01$). This is an encouraging results, as it verifies the usefulness of the generated data for improving the extrinsic low resource task. For the ‘all’ test set experiments, the improvement is less pronounced, with maximum gain from synthetic data being around 2%, again for the CVAE models. This smaller improvement could be because this test set is not as low resource (roughly twice as many train carriers phrases per



(a)



(b)

Figure 6: Extrinsic task performance change as a function of intrinsic accuracy BLEU4 for (a) all domains and (b) the movies domain. The y axis represents how much performance improved or deteriorated after adding synthetic data to the train set.

intent on average, 41.55 instead of 24.25), therefore harder to improve using synthetic data. Note that the baseline F1 scores (no synthetic data) are 0.58 for movies and 0.60 for the ‘all’ test set.

We investigate the correlation between the intrinsic metrics and the extrinsic F score by performing Ordinary Least Squares (OLS) regression between the two types of metrics, computed on the ‘all’ test set. We find that intrinsic accuracy metrics like BLEU4 and slot c.o. have significant positive correlation with macro F (R^2 of 0.31 and 0.40 respectively, $p \approx 0$) across all experiments/models, though perhaps not as high as one might expect. We also computed via OLS the combined predictive power of all intrinsic metrics for predicting extrinsic F, and estimated an R^2 coefficient of 0.53 ($p \approx 0$). The diversity and novelty metrics add a lot of predictive power to the OLS model when combined with accuracy metrics, raising R^2 from 0.40 to 0.53, validating the need to take these aspects of NLG performance into account. However, intrinsic diversity and novelty are only good predictors of extrinsic performance when combined with accuracy, so they only become significant when comparing models of similar intrinsic accuracy.

6 Conclusions

We described a framework for controlled text generation for enriching training data for new NLU functionality. Our challenging text generation setup required control of the output phrases over a large number of low resource signatures of NLU func-

tionality. We used intrinsic metrics to evaluate the quality of the generated synthetic data in terms of accuracy, diversity and novelty. We empirically investigated variational encoder-decoder type models and proposed to use a CVAE based model, which yielded the best results, being able to generate phrases with favorable accuracy, diversity and novelty trade-offs. We also demonstrated the usefulness of our proposed methods by showing that the synthetic data can improve the accuracy of an extrinsic low resource classification task.

7 Acknowledgments

This work was performed while Nikolaos Malandrakis was at Amazon Alexa AI, Sunnyvale.

References

- Samuel R. Bowman, Luke Vilnis, Oriol Vinyals, Andrew M. Dai, Rafal Jozefowicz, and Samy Bengio. 2016. [Generating sentences from a continuous space](#). In *Proceedings of the SIGNLL Conference on Computational Natural Language Learning (CONLL)*, pages 10–21.
- Jiaxian Guo, Weinan Zhang Yong Yu Sidi Lu, Han Cai, and Jun Wang. 2018. [Long text generation via adversarial training with leaked information](#). In *Proceedings of AAAI*, pages 5141–5148.
- Zhiting Hu, Zichao Yang, Xiaodan Liang, Ruslan Salakhutdinov, and Eric P. Xing. 2018. [Toward controlled generation of text](#). arXiv:1703.00955.

- Eric Jang, Shixiang Gu, and Ben Poole. 2016. [Categorical reparameterization with gumbel-softmax](#). arXiv:1611.01144.
- Diederik P Kingma, Shakir Mohamed, Danilo Jimenez Rezende, and Max Welling. 2014. [Semi-supervised learning with deep generative models](#). In *Advances in Neural Information Processing Systems*, pages 3581–3589.
- Diederik P Kingma and Max Welling. 2013. [Auto-encoding variational bayes](#). arXiv:1312.6114.
- Minh-Thang Luong, Hieu Pham, and Christopher D. Manning. 2015. [Effective approaches to attention-based neural machine translation](#). arXiv:1508.04025.
- Daniel Moyer, Shuyang Gao, Rob Breckelmanns, Aram Galstyan, and Greg Ver Steeg. 2018. [Invariant representations without adversarial training](#). In *Advances in Neural Information Processing Systems 31*, pages 9101–9110.
- Kishore Papineni, Salim Roukos, Todd Ward, and Wei-Jing Zhu. 2002. [Bleu: A method for automatic evaluation of machine translation](#). In *Proceedings of the 40th Annual Meeting on Association for Computational Linguistics*, pages 311–318.
- Aaditya Prakash, Sadid A. Hasan, Kathy Lee, Vivek Datla, Ashequl Qadir, Joey Liu, and Oladimeji Farri. 2016. [Neural paraphrase generation with stacked residual lstm networks](#). arXiv:1610.03098.
- Rajeswar, Subramanian S., Dutil F., Pal C., and A. Courville. 2017. [Adversarial generation of natural language](#). arXiv:1705.10929.
- Abigail See, Peter J. Liu, and Christopher D. Manning. 2017. [Get to the point: Summarization with pointer generator networks](#). In *Proceedings of ACL*, pages 1073–1083.
- Iulian Vlad Serban, Alessandro Sordani, Ryan Lowe, Laurent Charlin, Joelle Pineau, Aaron C Courville, and Yoshua Bengio. 2017. [A hierarchical latent variable encoder-decoder model for generating dialogues](#). In *AAAI*, pages 3295–3301.
- Xiaoyu Shen, Hui Su, Yanran Li, Wenjie Li, Shuzi Niu, Yang Zhao, Akiko Aizawa, and Guoping Long. 2017. [A conditional variational framework for dialog generation](#). arXiv:1705.00316.
- Hideki Shima and Teruko Mitamura. 2011. [Diversity-aware evaluation for paraphrase patterns](#). In *Proceedings of the TextInfer 2011 Workshop on Textual Entailment*, pages 35–39.
- Ilya Sutskever, Oriol Vinyals, and Quoc V Le. 2014. [Sequence to sequence learning with neural networks](#). *Advances in neural information processing systems*, pages 3104–3112.
- Xinchen Yan, Jimei Yang, Kihyuk Sohn, and Honglak Lee. 2015. [Attribute2image: Conditional image generation from visual attributes](#). arXiv:1512.00570.
- Quanzeng You, Chen Fang Hailin Jin, Zhaowen Wang, and Jiebo Luo. 2016. [Image captioning with semantic attention](#). In *Proceedings of the IEEE conference on computer vision and pattern recognition*, pages 4651–4659.
- Lantao Yu, Jun Wang Weinan Zhang, and Yong Yu. 2017. [Seqgan: Sequence generative adversarial nets with policy gradient](#). In *Proceedings of AAAI*, pages 2852–2858.
- Tiancheng Zhao, Ran Zhao, and Maxine Eskenazi. 2017. [Learning discourse-level diversity for neural dialog models using conditional variational autoencoders](#). arXiv:1703.10960.
- Xianda Zhou and William Yang Wang. 2018. [MojiTalk: Generating emotional responses at scale](#). In *Proceedings of ACL*, pages 1128–1137.